

Whitney M. Young Magnet School



CSA Partners Ltd.
Architects & Urban Designers



Top : Bldg A Southwest corner at dusk

Bottom: Bldg A SW Panoramic

Bottom R: Bldg C North facade

email: contact@csa-partners.com web: www.csa-partners.com



Media Link: Pending

Context: Whitney M Young School is one of the leading K-12 schools in Chicago and Illinois. We were requested to design a complete facade replacement of Building A, C and connectors and a roof replacement for Building C and the connectors.

Concept: The existing glazing is thermally inefficient and does not meet current design, energy efficiency, wind and constructability standards.

We are replacing the entire glazing for both Buildings A&C, as well as the two bridge connectors with a fully captured thermally broken glazing system that meets current design standards. Additionally we shall deal with the thermal analysis and building commissioning. The system includes features for Bird Safety. The area of replacement is approximately 48,500 sf of system glazing.

Project Data:

Building type
Education-K-12 High School

Location
Chicago IL

Site Area
N/A

Project Area
156,000

Client
Chicago Public Schools

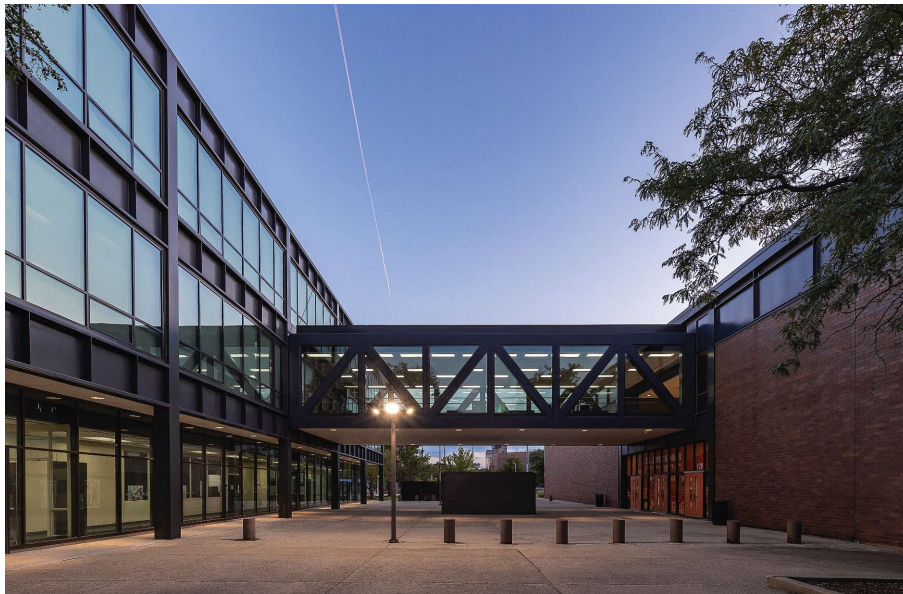
Completion Year
Glazing and Roof Replacement 2022-2024

Construction Cost
\$ 15.32 Million at Bid

Client Satisfaction through Design Excellence

Whitney M Young Magnet School

CSA Partners Ltd.



Top L&R: Building A Bridge Connector
Bottom L: Building A-B Bridge
Bottom R: Bldg C with Bridge

Architects & Urban Designers

Whitney M Young Magnet School

CSA Partners Ltd.



Top and Bottom L: Building A & C with Connector
Top and R: Bay Views of Building A

Team

Cyrus Subawalla- Principal Designer

Tejash Panchal- Project Architect

Gandhali Marathe - Project Mgr.

Architects & Urban Designers