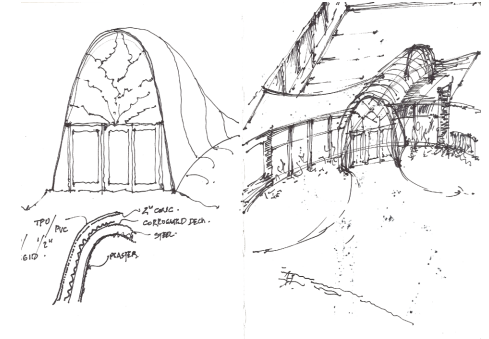


## North Suburban Synagogue Beth El-Entry Pavilion & Courtyard



**CSA Partners Ltd.**  
Architects & Urban Designers



Top L : View from SW of exterior entry and pavilion  
Top R: Conceptual sketches  
Bottom: View from NW of exterior entry and pavilion

**Context:** The synagogue was designed with a loggia and frontal access in the original 1961 Percival Goodman plans. Since then a 1983 addition for the administration wing removed the sense of entry and procession and is currently a long narrow corridor without presence. In our original master-plan from 2007 and reiterated in 2011, we have always felt the need to restore that sense of entry and procession into a sacred space. The current approach helps tie in various disparate elements and provide a single point of entry and focus to the synagogue. The different elements also have different formal aesthetics and hence tying them in will be valuable to the synagogue.

email: [contact@csa-partners.com](mailto:contact@csa-partners.com) web: [www.csa-partners.com](http://www.csa-partners.com)

### Project Data:

Building type  
Cultural-Entry Pavilion Enclosed Court  
Sustainability/LEED  
Complies with IECC 2021  
Location  
Highland Park, IL  
Site Area  
6.5 Acres  
Project Area  
Approx.4000 sf + 19800 sf renovation  
Client  
North Suburban Synagogue Beth El  
Completion Year  
Currently in Design  
Construction Cost  
Withheld

Client Satisfaction through Design Excellence

North Suburban Synagogue Beth El



**Concept:** Our concept is simple and fluid. We have tied in the existing Percival Good man sweep of the rotunda that extends from the main sanctuary into the NW corner of the school wing in a gentle arc form that gives a sense that this always belonged. The east side ties in the entry points of the mansion with the school wing thereby creating a delicate hour-glass plan form that is the outcome of meeting existing geometries. The entry vestibule has subtle hints to Jewish history and memory. The existing courtyard is now enclosed as an interior space with generous skylights that allow for a year round space of play, prayer and gathering.

Top L&R: Views of entry pavilion and courtyard  
 Bottom L& R : Interior Views of Pavilion  
 Team  
 Cyrus Subawalla-Principal Designer  
 Tejash Panchal-Associate Principal  
 Gandhali Marathe-Associate Principal