

Hindu Temple Greater Chicago-Education Center



CSA Partners Ltd.
Architects & Urban Designers



Top: View from NE Hills

Concept:

There is acute need for a dedicated school building on this site where academic instruction can be facilitated. The school while primarily dedicating its mission to children is also open to adult education, within and outside the community for those interested in learning the fundamentals and subtle nuances that grace the philosophy of Hinduism. We wish that this school be inclusive and help people understand our pacifist yet informed way of life followed by one of the most affluent immigrant cultures residing in the United States.

The proposed new school building will provide for the following

- 7 large pods each 52.5ft x 28ft () accommodating two class rooms, bathrooms, meeting rooms and offices.
 - Each of these pods could be further divided by partitions into 14 smaller (34 ft x 14ft in size) spaces.
 - A multi-purpose hall which can accommodate flexible uses for recitals, dance, lectures and other media presentations and includes a green room facility
 - The facility is completely accessible for people with disabilities by elevators and as each level is connected by a system of ramps; which also serve as display galleries for rotating exhibits
 - The entire ensemble of structures have been designed to work with our hilly site topography and touch the land gently.
- Designed by architect from CSA-Partners, Ltd., the following conceptual plan has been approved by the 2018 HTGC Board.

email: contact@csa-partners.com web: www.csa-partners.com

Context:

Our clients wish to create one of the first Hindu Education Centers in the world, but especially in North America, where Hinduism and its pacifist ideals can be taught to both followers and the lay public.

First established in 1977, the Hindu Temple of Greater Chicago (HTGC) is a 501 C(3) not-for-profit organization located in the suburb of Lemont, Illinois. This scenic bluff hill-side 22-acre property affords unique views housing two temples – Shri Rama Temple and Shri Ganesha-Siva-Durga Temple since the 1980s. Subsequently, a Community Center and a Swami Vivekananda Center were developed adding to the cultural and spiritual experiences for the tens of thousands of Hindus who visit this sacred campus each year.

Project Data:

Building type
Educational- K through Adult

Location
Lemont, IL

Site Area
22 Acres

Project Area
14,000sf

Client
Hindu Temple Greater Chicago

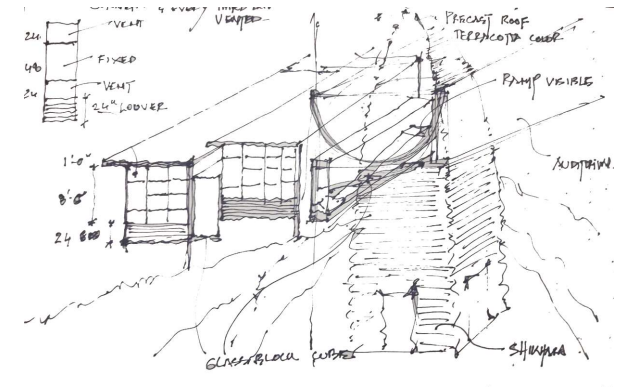
Completion Year

Ongoing

Construction Cost
Est. \$ 3.65 Million

Client Satisfaction through Design Excellence

Hindu Temple Greater Chicago-Education Center



Top L: View from Driveway
Top R: Conceptual sketch
Bottom: View from driveway

Team

Cyrus Subawalla-Principal Designer
Tejash Panchal- Project Architect
Gandhali Marathe-Project Mgr

Architects & Urban Designers