

## CSA Partners Ltd.

email

contact@csa-partners.com

web

www.csa-partners.com

phone

+1 312 578 0550(U.S.) 91 22 23615706, 91 98702 19229 (IN)

address

29 E. Madison St. Suite 1309, Chicago IL 60602

69A Nepeansea Road, Maneesha 1st Floor, Mumbai 400006

## Cognizant at Siruseri - Phase II



Building type  
Mixed Use, office+retail

Location  
Siruseri (Chennai), India

Site Area  
Approx 29 Acres

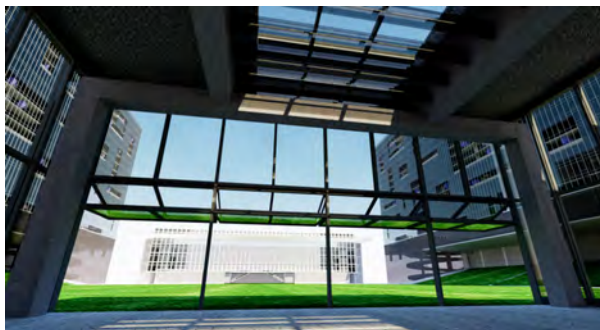
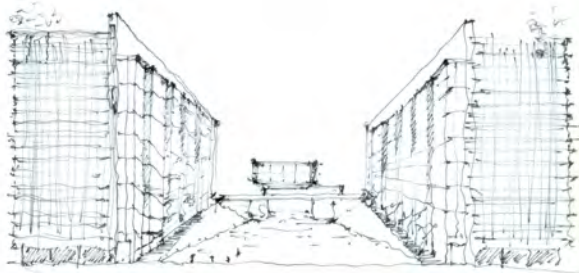
Project Area  
Approx 4 million sf - phase2

Client  
Larsen and Toubro, Ltd.

Completion Year  
Currently pending Govt. clearance  
Design revised in Feb 2015

**History:** Our office was asked to join one of India's largest building and engineering consortiums, Larsen and Toubro, Ltd. (LNT-ECC), in the creation of a competition entry for the second phase of a corporate office commission for use by the multinational client Cognizant Technology Solutions. Working closely with LNT-ECC, our office secured the project and developed a scheme that would meet the desires of the client.

**Client Brief:** Larsen and Toubro, Ltd. approached our office to design an office building for Cognizant Technology Solutions. The initial phase of the complex (Phase 1), completed on a notably difficult site, consists of an agglomeration of buildings positioned to the west of our office's proposal for Phase 2. We were asked to provide iconic structures with a core built element to unify the

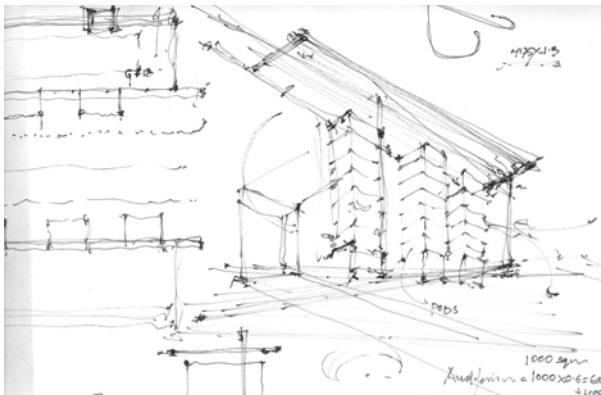


Top : Courtyard aerial view  
 Middle L: Sketch of concept  
 Bottom L: View from amphitheater

complex expansion in a meaningful relationship to the preexisting buildings.

**Concepts:** Organized as a centralized plaza with four structures defining the courtyard, the complex is laid-out with defined views derived from access corridors. Our intent was to make the ground floor as pedestrian-friendly and usable as possible. The plaza itself is bound to the north and south by two large office towers, each 14 stories tall, with a low profile auditorium to the east and a cantilevered dining block to the west that penetrates—yet completes—the rectangular envelope of the plaza. From the north a processional entrance is provided that wraps around a cantilevered dining block, with a ceremonial drop-off for visitors accessing any one of the four structures; meanwhile, the insertion of covered loggias and walkways through the buildings—further connected by open double-height glazed lobbies—ensures that the scale of all internal space responds to the pedestrian experience.

The office blocks evolve from two distinct organizing ideas: First, on the private modular office side fronting the vehicular traffic streets, there is an internalized core to maximize the quantity of perimeter office space. Second, on the side fronting the plaza, stand six tower bays with multipurpose, multi-height flexible use space that can better serve as seminar areas, conference rooms, research



centers and libraries; furthermore, office space fronting the plaza is connected by adjustable metal stairs that will allow for enhanced interaction between the tenants and the public areas. The top two floors of the office blocks hold penthouse offices with internalized gardens ideal for the placement of corporate administrative functions. The kitchen and dining facilities have been separated as an independent core.

The kitchen facility has a north-south orientation and houses four kitchen operators, a health center, dormitories, a clinic and a library; meanwhile, the dining facility is accessed from a triple-height glazed lobby that intentionally blocks vehicular street to the north, with a five story glazed dining hall overlooking the plaza with unobstructed views.

The east end of the plaza is enclosed by a transparent auditorium designed with an internalized solid cella surrounded by a glazed structure, allowing the outside plaza space to visually penetrate the interior walkways.

**Intent and Recognition:** The building is slated to pursue a LEED Certification.

Design Consultant Team

Cyrus Subawalla-Principal Designer  
Sangwan Seo-Project Designer  
Ralph Polk-Associate Principal

Architects & Engineers

A/E Design  
LNT-EDRC

Construction

Larsen & Toubro LNT-ECC

Top L: Courtyard view from dining block

Top R: Courtyard view from office

Middle L: Sketch of flexible height bays

Middle R: Site plan

Bottom L: View from under arena